



**Alzheimer's
Drug Discovery
Foundation**

Conquering Alzheimer's Through Drug Discovery

Saving Neurons. Saving Minds.

Annual Report 2013

The Alzheimer's Drug Discovery Foundation offers much more than money. We provide independent and expert due diligence, as well as proactive assistance, for scientists exploring new drugs to treat Alzheimer's.

Mission

The mission of the Alzheimer's Drug Discovery Foundation (ADDF) is to rapidly accelerate the discovery of drugs to prevent, treat and cure Alzheimer's disease, related dementias and cognitive aging.

Approach

Founded in 1998 by co-chairmen Leonard A. and Ronald S. Lauder of the Estée Lauder cosmetics family, the ADDF provides seed funding for early-stage drug research that may otherwise go unfunded. By supporting leading scientists who are conducting the most promising, innovative Alzheimer's drug research worldwide, we can work towards finding a cure.

The ADDF is a biomedical venture philanthropy. Many of our grants are structured as mission-related investments, providing a return that is reinvested in new drug research.

In 2013, 100 percent of your donations went directly to Alzheimer's drug research and related programs. All of the ADDF's administrative and overhead costs were covered by a private foundation.

Impact

The ADDF has granted more than \$65 million to fund close to 450 Alzheimer's drug discovery programs and clinical trials in academic centers and biotechnology companies worldwide.

In 2013, the ADDF carried an active portfolio of 89 research grants.

Where We Fund

The ADDF supports the most promising and diverse research projects in countries around the world, including:

Austria
Australia
Belgium
Canada
China
Finland

France
Germany
Ireland
Israel
Italy
Netherlands

Spain
Sweden
Switzerland
Taiwan
United Kingdom
United States

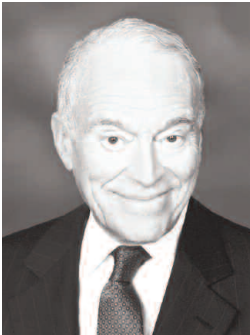
With drug discovery, there is hope.

Today, an estimated 44 million people worldwide are living with Alzheimer's, a number that will continue to grow exponentially over the next 20 years. There is so much potential in research projects around the world, but we need to continue to invest in science to unlock that potential and bring forth results.

The Alzheimer's Drug Discovery Foundation remains committed to funding the most promising research and accelerating drug discovery so that we may help bring effective treatments — and hopefully a cure — to those afflicted by this devastating disease.

In 2013, 100 percent of your donation went directly to Alzheimer's drug research and related programs. With your help, we can save neurons, minds and, ultimately, lives.

With my deepest thanks,

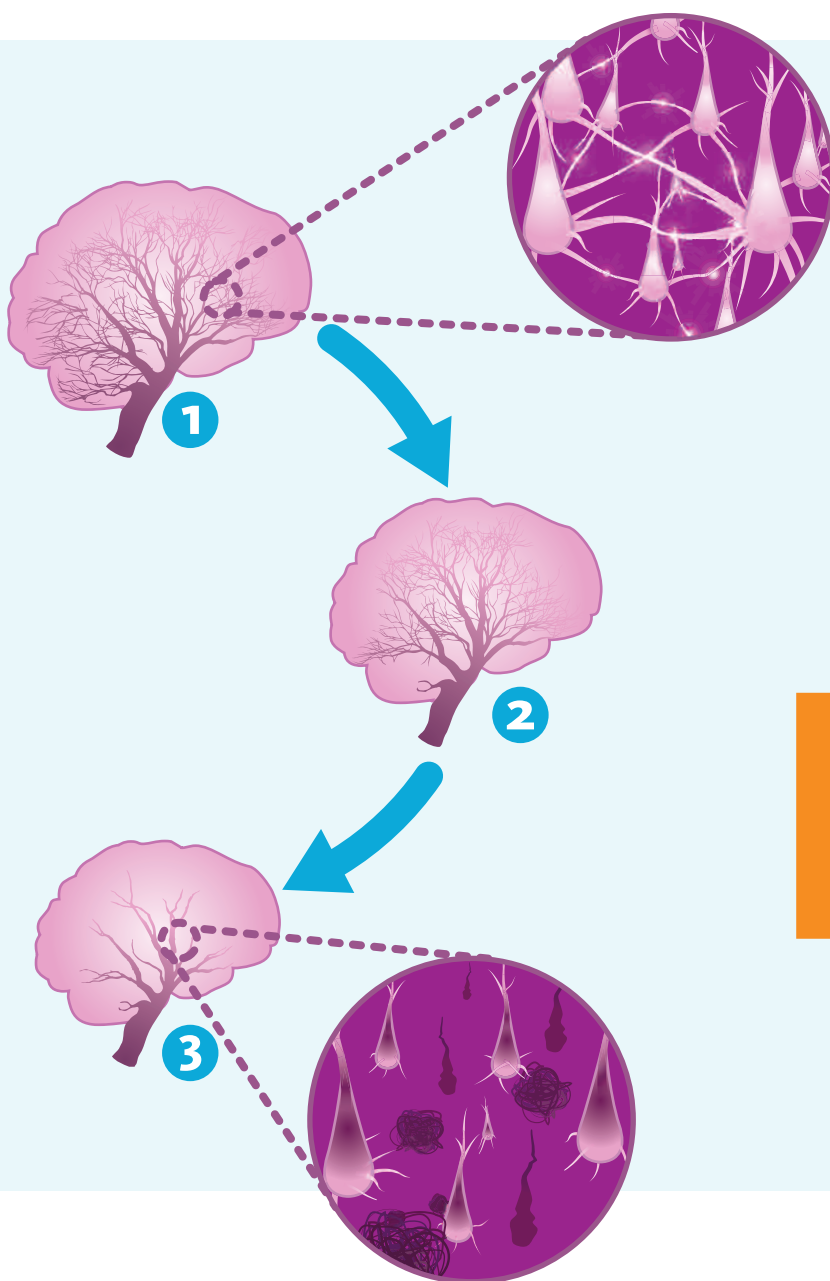


A handwritten signature in blue ink that reads "Leonard A. Lauder". The signature is fluid and cursive.

Leonard A. Lauder
Co-Chairman

Saving Neurons. Saving Minds.

Why do neurons lose connectivity and disintegrate as Alzheimer's progresses? What can we do to prevent this from happening?



1 Healthy Brain

Neurons form an intricate grid of connections which allow different modules of the brain to communicate with each other leading to complex functions like thought, memory, emotion, and reasoning.

2 Early-Stage Alzheimer's

As the connections between neurons break down, communication between critical centers of the brain begin to fade; the result is mild dementia.

The ADDF funds the development of "neuroprotective" drugs designed to prevent the loss of connections and protect brain cells from decay and death.

3 Late-Stage Alzheimer's

In the final stages of Alzheimer's, so many connections are lost that large parts of the brain become cut off, resulting in complete loss of cognitive function and the inability of patients to care for themselves.

A Letter from Howard Fillit, MD

Thanks to your continued support and generosity in 2013, the Alzheimer's Drug Discovery Foundation (ADDF) was able to fund many innovative, diverse and promising research projects around the world, increasing our likelihood of finding effective treatments — and a cure — for Alzheimer's.

We now understand many of the mechanisms that cause Alzheimer's disease. As the disease progresses, neurons (or nerve cells) lose their connections with one another and eventually die, causing the loss of memory and other essential cognitive functions and resulting in dementia.

Developing drugs that protect neurons from damage and death is critical to finding effective, disease-modifying treatments for Alzheimer's. The ADDF has funded several key research projects in this area in the hope of "saving neurons and saving minds:"

- **Clinical trials of novel drugs to inhibit the degeneration of neurons:** In 2013, the ADDF supported a phase 1 clinical study of a "neuroprotective" agent by biotechnology company Pharnatrophix. Their drug, LM11A-3, prevented the degeneration of neurons in ADDF-funded preclinical research. The company is now raising funds for a phase 2 study.
- **Clinical trials of novel hormones to stimulate neurogenesis and promote neuroprotection:** The ADDF provided funding to Professor Roberta Brinton of the University of Southern California for her drug allopregnanolone, a hormone derivative which stimulates the development of new brain stem cells and is neuroprotective. ADDF seed funding enabled Dr. Brinton to win an \$8M grant from the NIH in 2013 to further her research.
- **Repurposing neuroprotective drugs already approved for treating other conditions.** On page 4, we highlight an exciting clinical trial the ADDF is funding to study whether an existing drug for Parkinson's disease called rasagiline can slow neurodegeneration in patients with Alzheimer's.

“Developing treatments that protect neurons from damage and death is critical to finding a cure for Alzheimer's.”

These clinical trials are a snapshot of the great steps we have made toward translating our basic research knowledge into the development of innovative neuroprotective drugs for Alzheimer's. There are many more studies like these that need funding.

On behalf of all those suffering with dementia and their loved ones, I personally thank you for your ongoing commitment to the ADDF. With your partnership, we CAN accelerate drug discovery and ultimately conquer Alzheimer's disease.



Howard

Howard Fillit, MD
Founding Executive Director and Chief Science Officer

Spotlight on Research

Can a drug for Parkinson's disease help slow the progression of Alzheimer's?

Dr. Jeffrey Cummings is conducting a new study, designed in collaboration with the Alzheimer's Drug Discovery Foundation's team of neuroscientists, to find out whether an FDA-approved treatment for Parkinson's can help slow the progression of Alzheimer's. Results may be available in as few as two years.

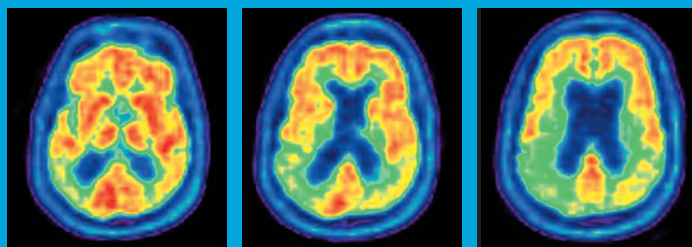
As part of the Alzheimer's Drug Discovery Foundation's (ADDF) Program to Accelerate Clinical Trials (PACT), Jeffrey L. Cummings, MD, ScD, is leading a new clinical trial at the Cleveland Clinic Lou Ruvo Center for Brain Health that is investigating rasagiline, an FDA-approved treatment for Parkinson's disease, a neurodegenerative disease similar to Alzheimer's disease in many ways. This exciting repurposing opportunity may provide physicians with new and critical evidence to help inform the treatment and care of their patients.

Research has found that the drug may improve symptoms and could modify the course of disease progression by protecting nerve cells from damage and boosting the function of the mitochondria in the brain. This Phase 2a clinical trial will examine whether Alzheimer's patients treated with rasagiline experience enhanced brain metabolism, indicating an improvement in brain function, compared to patients treated with a placebo.

Dr. Cummings' project is just one example of how the ADDF's PACT program is working to repurpose existing FDA-approved drugs, leveraging standing scientific evidence and research to accelerate the drug development process. The ADDF looks forward to exploring more repurposing opportunities to help Alzheimer's patients.



Jeffrey L. Cummings, MD, ScD
Cleveland Clinic Lou Ruvo Center
for Brain Health
Las Vegas, NV



From left to right, PET scans showing decreasing metabolism in the brain as Alzheimer's disease progresses.

Additional Research and Partnership Programs | In 2013, ADDF led major research program collaborations of Sciences, The Foundation for Mitochondria Medicine, The Robert A. and Renée E. Belfer Family Foundation



Highlights from the Laboratories

The Alzheimer's Drug Discovery Foundation (ADDF) is proud to support the innovative research of scientists around the world as they work tirelessly to discover and develop new treatments for Alzheimer's and related dementias. The following ADDF-funded investigators are leading promising research in neuroprotection, one of many diverse areas that ADDF funds.

“ The support and funding Yuma Therapeutics has received from ADDF has been transformative, enabling us to advance our program from medicinal chemistry to *in vivo* proof-of-concept studies. ”

— Yukari Perrella



Dr. Eugenia Trushina, PhD
Mayo Clinic Rochester
Rochester, MN

Through the ADDF ACCESS program (featured on page 8), Dr. Trushina is working with a contract research organization to develop and test new drug candidates that improve the function of mitochondria, the energy generators of cells. These drug candidates could ultimately improve neuron function and prevent deterioration.



Els Fieremans, PhD
New York University
School of Medicine
New York, NY

Dr. Fieremans and her team are investigating whether changes in white matter, one of two types of tissue that make up the brain, can be used as a biomarker to detect early brain changes in people with Alzheimer's. By identifying and treating patients that will develop Alzheimer's prior to the onset of symptoms, we can increase the likelihood that treatments will be effective.



Yukari Perrella
Yuma Therapeutics
Cambridge, MA

Yuma Therapeutics is developing novel inhibitors for Hsp90, a protein that regulates the accumulation of the tau protein in the brain — a hallmark of Alzheimer's disease. Drug candidates developed by this project could potentially protect neurons from dysfunction and prevent tau build up.

with other foundations, including The Association for Frontotemporal Dementia, The New York Academy and other valued partners, leveraging interdisciplinary expertise and funding towards our common goals.



Our Patrons Celebrate Hope

A Banner Year for Alzheimer's Drug Discovery!

Thanks to you, we raised **more than \$10 million** in 2013! Your contributions helped fund critical Alzheimer's drug research and related programs, and provided hope to those burdened by Alzheimer's disease.

For the first time, more than 2,000 people came together to support the Alzheimer's Drug Discovery Foundation (ADDF) and our mission. Every single one of your contributions helped advance critical Alzheimer's research — imagine what we can achieve together in the future!

Thank you for making 2013 a banner year for the ADDF!



Nancy M. Sanford

Nancy M. Sanford
Vice President and Chief Philanthropy Officer

In an effort to broaden awareness and raise critical funds for Alzheimer's research, the Alzheimer's Drug Discovery Foundation (ADDF) hosted several major special events in 2013.



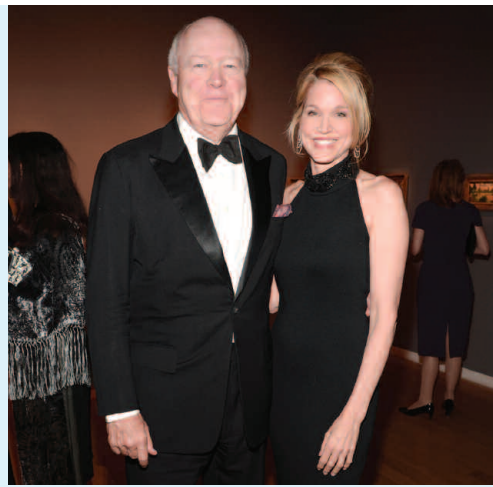
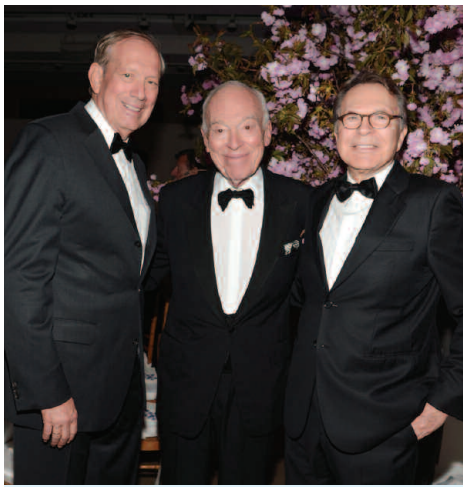
Third Annual Great Ladies Luncheon and Fashion Show

Saks Fifth Avenue | Chevy Chase, MD | April 11, 2013

Co-Chairs | Leonard A. Lauder | Elise and Marc Lefkowitz

In partnership with Saks Fifth Avenue, the ADDF's third annual Great Ladies Luncheon and Fashion Show raised nearly \$270,000. Guests enjoyed a runway show and special appearance by famed designer Jason Wu, and Sharon Percy Rockefeller received the Great Ladies Award.

Above: Jason Wu model on runway. Jason Wu, Elise Lefkowitz and Marc Lefkowitz.



Seventh Annual Connoisseur's Dinner: To Live is to Think

Sotheby's | New York, NY | May 2, 2013

Event Chairs | Leonard A. Lauder | Nancy Corzine

The ADDF's seventh annual Connoisseur's Dinner raised \$1.7 million for scientific drug research for Alzheimer's. Paula Zahn was awarded the third annual Chairman's Award, and Sotheby's Chairman Jamie Niven conducted the "Fund a Scientist" live auction, raising a record \$475,000 onsite for a single scientist's research.

Above: George Pataki, Leonard A. Lauder and Earle I. Mack. Nancy and Mel Goodes and David Goodes. Jamie Niven and Paula Zahn.



**Fourth Annual Fall Luncheon & Symposium
Hope on the Horizon: New Drugs for Alzheimer's Disease**

The Pierre | New York, NY | September 17, 2013

Executive Chair | Leonard A. Lauder

The ADDF's fourth annual Fall Luncheon and Symposium raised more than \$795,000 for Alzheimer's drug research and related programs. Bonnie Pfeifer Evans and Alice Shure presented The Charles Evans Award to Liz and Randal Sandler, who announced a \$1 million matching challenge grant, calling on other supporters to make a pledge — at any level — to support clinical trials. Paula Zahn moderated an insightful conversation between Howard Fillit, MD, and Jeffrey L. Cummings, MD, ScD, director of the Cleveland Clinic's Lou Ruvo Center for Brain Health.

Above: Liz Sandler, Nancy Corzine, Randal Sandler and Nancy Sanford. Paula Zahn, Gary Lauder, Howard Fillit, Nancy Corzine and Leonard A. Lauder.

Bringing Scientists Together To Accelerate Alzheimer's Research

The Alzheimer's Drug Discovery Foundation's (ADDF) scientific conferences and resource programs promote the exchange of ideas, the sharing of research results and the formation of strategic alliances to further drug development goals.

7th Drug Discovery for Neurodegeneration Conference: An Intensive Course on Translating Research into Drugs

San Francisco, CA
February 10-12, 2013

The ADDF's annual conference, planned in conjunction with the National Institutes of Health, attracted approximately 140 academic, industry and government scientists from around the world. Designed to advance the development of new drugs for neurodegenerative diseases, the conference educated scientists on the principles and practice of drug discovery with a focus on Alzheimer's disease, Parkinson's disease, Amyotrophic Lateral Sclerosis and Multiple Sclerosis.

14th International Conference on Alzheimer's Drug Discovery

Jersey City, NJ
September 8-10, 2013

One hundred and forty key stakeholders from the pharmaceutical, biotechnology, government and academic communities came together at this annual conference to present ADDF-funded research and establish collaborations and partnerships to accelerate the development of innovative treatments.

The ADDF also hosted or exhibited at several additional conferences in collaboration with other scientific institutions.



Diana Shineman, Director of Scientific Affairs, ADDF



ADDF ACCESS

Helping Scientists Find the Expertise They Need

ADDF ACCESS provides academic and small biotechnology researchers with access to a virtual network of contract research organizations (CROs), drug development experts and educational resources. In 2013, the ADDF expanded and redesigned the platform to make this resource available to the broader scientific community to promote collaboration between scientists investigating different neurodegenerative diseases. This expanded platform was made possible with the support and partnership of The Beyond Batten Disease Foundation, The BrightFocus Foundation and The Children's Tumor Foundation.

<http://www.alzdiscovery.org/research-and-grants/addf-access/>



ADDF Aging & Alzheimer's Prevention Program

Empowering People to Protect Their Aging Brains

ADDF's Aging and Alzheimer's Prevention program provides an independent scientific evaluation of the evidence surrounding pharmaceuticals, supplements and natural products that claim to prevent or delay cognitive aging and Alzheimer's. Because prevention is very difficult to prove scientifically, the program works to enhance innovative approaches to strengthen the evidence for prevention through targeted funding. In 2013, the ADDF funded a grant for computer software that predicts the effectiveness of therapies and organized an advisory panel on using existing data from human studies to guide Alzheimer's prevention. The ADDF also began development of a new website, Cognitive Vitality, to empower individuals to make choices for their own long-term brain health based on the best available science.

<http://www.alzdiscovery.org/cognitive-vitality>

Funding Research Around the World

In 2013, we granted more than \$8 million to 39 scientists globally.

Preclinical Drug Discovery Program — Academic

Carmela R. Abraham, PhD

Boston University School of Medicine, Boston, MA
Development of Klotho Enhancers as Novel Therapeutics for AD
AWARD: \$266,509

Narayan Bhat, PhD

Medical University of South Carolina, Charleston, SC
Vasculoprotective approach to AD treatment
AWARD: \$230,961

The Charles Evans Foundation Award for Excellence in Alzheimer's Drug Discovery

Deborah Blacker, MD

Massachusetts General Hospital, Charlestown, MA
Alzheimer's Disease Modifiable Risk Database
AWARD: \$25,000

Aging and Alzheimer's Disease Prevention Program

Els Fieremans, PhD

New York University School of Medicine, New York, NY
White matter involvement in preclinical AD: a multimodal MR-PET study
AWARD: \$200,184

Massimo Filippi, MD

Fondazione Central San Raffaele, Milan, Italy
Brain network analysis for the early diagnosis of AD from other dementias
AWARD: \$125,000

Thota Ganesh, PhD

Emory University, Atlanta, GA
EP2 antagonists for the suppression of inflammation and neuropathology in Alzheimer's model
AWARD: \$101,000

Xiong Jiang, PhD

Georgetown University, Washington, DC
A novel fMRI biomarker of asymptomatic Alzheimer's disease
AWARD: \$140,000

Tae-Wan Kim, PhD

Columbia University Medical Center, New York, NY
Screening for small molecule modulators of tau in stem cell-derived primary neurons
AWARD: \$150,000

David Knopman, MD

National Biomedical Research Ethics Council, INC Rockville, MD
National Institutional Review Board for Neurodegenerative Diseases
AWARD: \$100,000

Peter Lansbury, PhD

Brigham and Women's Hospital, Boston, MA
Characterizing the mitophenotypes of Alzheimer's disease: peripheral cell biomarkers for patient selection and measurement of drug response.

AWARD: \$100,000

Alzheimer's Drug Discovery Foundation/Ronald D. Eastman Fund Award to Accelerate Drug Discovery

Ling Li, DVM, PhD

University of Minnesota, Minneapolis, MN
ApoJ/Clusterin Peptide as a Novel Therapeutic Agent for Alzheimer's Disease
AWARD: \$200,000

Pei-Jung Lin, PhD

Tufts University, Boston, MA
Unintended Benefits? The Potential Economic Impact of Chronic Disease Management on Alzheimer's Prevention
AWARD: \$25,000

Made possible in partnership with funding from the Alzheimer's Foundation of America

Chien-liang Lin, PhD

Ohio State University, Columbus, OH

Development of small molecule activators of glutamate transporter EAAT2 translation for Alzheimer's disease

AWARD: \$220,000

Alzheimer's Drug Discovery Foundation/Alzheimer's Foundation of America Award to Accelerate Drug Discovery

Salvatore Oddo, PhD

Banner Sun Health Research Institute, Sun City, AZ

Reducing mTOR activity as a treatment for Alzheimer's disease

AWARD: \$242,000

Nathalie Pochet, PhD

Brigham & Women's Hospital, Boston, MA

Integrative genomic approach to prioritize targets for drug discovery and development in Alzheimer's disease and aging-related cognitive decline

AWARD: \$135,000

Alzheimer's Drug Discovery Foundation/McCaffrey Fund Award to Accelerate Drug Discovery

Jerri Rook, PhD

Vanderbilt Center of Neuroscience Drug Discovery, Nashville, TN

In Vivo Characterization of Novel mGlu5 PAMs in Aged Rats

AWARD: \$150,000

Grace Stutzmann, PhD

Rosalind Franklin University of Medicine and Science, North Chicago, IL

Stabilizing ryanodine calcium channels as a novel drug development strategy for Alzheimer's disease therapeutics

AWARD: \$170,106

Malu Tansey, PhD

Emory University School of Medicine, Atlanta, GA

Modulation of peripheral inflammation and immune cell traffic in AD by XPro1595

AWARD: \$100,000

Eugenia Trushina, PhD

Mayo Clinic Rochester, Rochester, MN

Lead Discovery of Novel Small Molecule Compounds Effective in Restoration of Mitochondrial Function - Year 2

AWARD: \$140,000

Supported in part by Sir Evelyn and Lady Lynn Forester de Rothschild

Xiang (Simon) Wang, PhD

Howard University College of Pharmacy, Washington, DC

Highly Selective HDAC2 Inhibitors to Treat Alzheimer's Disease

AWARD: \$110,000

Alzheimer's Drug Discovery Foundation/Alzheimer's Foundation of America Award to Accelerate Drug Discovery

Keqiang Ye, PhD

Emory University, Atlanta, GA

TrkB Agonist Drug Development for Treating Alzheimer's Disease

AWARD: \$200,000

Sun Ok Yoon, PhD

Ohio State University, Columbus, OH

Testing novel JNK3-selective inhibitors in Alzheimer's disease mouse models

AWARD: \$158,336

Biotechnology Program — Preclinical**Larry Altstiel, MD, PhD***

Provectra Therapeutics Inc., Chapel Hill, NC

Adeno-Associated Virus Gene Therapy of Progranulin-Related Frontotemporal Dementia

AWARD: \$164,750

Dirk Beher, PhD*

Asceneuron SA, Lausanne, Switzerland

O-GlcNAcase Inhibitors for Alzheimer's disease and Tauopathies

AWARD: \$325,000

Martin Jefson, PhD

Rodin Therapeutics, Cambridge, MA

Selective HDAC2 Inhibitors for the Treatment of Cognitive Deficits in Alzheimer's Disease

AWARD: \$182,500

Yukari Perrella

Yuma Therapeutics Corporation, Brookline, MA

The effect of novel heat shock protein 90 (Hsp90) inhibitors on total and phosphorylated tau levels in cerebrospinal fluid and memory deficits in the hTAU441 (tauopathy) mouse transgenic model of Alzheimer's disease

AWARD: \$174,967

Paolo Pevarello, PhD

Axxam SpA, Milan, Italy

Optimization of P2X7 antagonists for AD treatment

AWARD: \$310,000

Conference Grants**Enrique Cadenas, MD, PhD**

Gordon Research Conferences, West Kingston, RI

Gordon Research Conference on Oxidative Stress and Disease: The metabolic-inflammatory axis in brain aging and Alzheimer's disease

AWARD: \$5,000

Kate Carr

Safe Kids Worldwide, Washington, DC

Safe Sports Think Tank: Exploring the relationship between childhood sports-related concussions and long-term cognitive outcomes

AWARD: \$5,000

Program to Accelerate Clinical Trials (PACT)

Jeffrey Cummings, MD

Cleveland Clinic Lou Ruvo Center for Brain Health,
Las Vegas, NV

Rasagiline Rescue in Alzheimer's Disease Clinical
Trial (R2 Trial)

AWARD: \$1,000,000

Program to Accelerate Clinical Trials - Repurposing

Anne Longo

Pharmatrophix, Menlo Park, CA

Phase 1 Study for P75 Small Molecule Ligand

AWARD: \$250,000

Michelle Mielke, PhD

Mayo Clinic Rochester, Rochester, MN

Evaluation of changes in plasma ceramides and amino
compounds with an mTOT Modulator Insulin Sensitizer
in AD patients

AWARD: \$6,960

ADDF-Belfer ApoE Therapeutics Innovation Program

Bradley Hyman, MD, PhD

Massachusetts General Hospital/Harvard Medical School,
Charlestown, MA

APOE2-based gene therapy approaches to alleviate
Alzheimer's disease neuropathological hallmarks

AWARD: \$250,000

Steven Paul, MD

Weill Medical College of Cornell University, New York, NY

Gene Delivery of Apolipoprotein E2 as a
Treatment for Alzheimer's Disease

AWARD: \$500,000

ADDF-Association for Frontotemporal Degeneration Partnership Program

Donald Lo, PhD

Duke University Medical Center, Durham, NC

Brain slice screen for microRNA-targeted drug lead
candidates for tau-associated FTD

AWARD: \$149,603

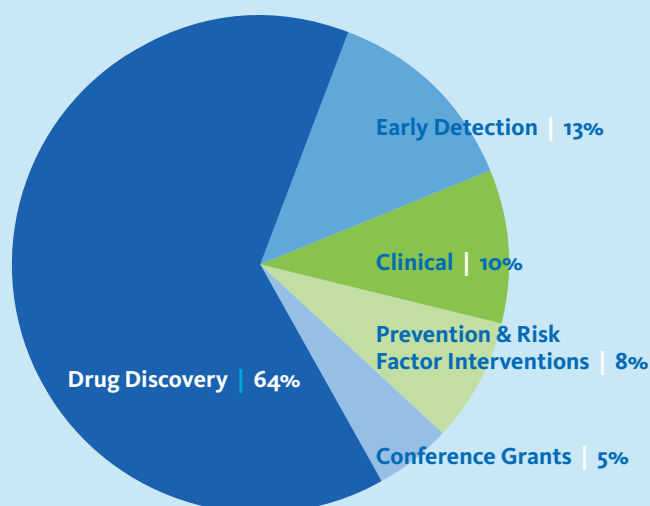
Jeffrey Rothstein, MD, PhD

Johns Hopkins University School of Medicine,
Baltimore, MD

Biomarker assay development to accompany antisense
oligonucleotide therapeutic for mutant C9orf72-positive
FTD patients

AWARD: \$150,168

2013 Funded Programs



ADDF-Foundation for Mitochondrial Medicine Partnership Program

James Bennett, MD, PhD

Virginia Commonwealth University, Richmond, VA

Increasing Mitochondrial Biogenesis in Alzheimer's Disease

Award: \$200,000

ADDF-New York Academy of Sciences Partnership Program

Blaine Roberts, PhD

Howard Florey Institute, Victoria, Australia

Validation of an effective blood test for Alzheimer's disease.

AWARD: \$140,000

ADDF-Canada

Sandra Black, MD, FRCP(C)

Sunnybrook Research Institute, University of Toronto,
Toronto, Ontario, Canada

Sartans to Slow Alzheimer's Disease: A Randomized,
Open-Label, Head-to-Head, Proof-of-Concept Study of
Angiotensin Receptor Blockers Versus ACE Inhibitors

AWARD: \$992,388

*Made possible through a generous grant by The W. Garfield
Weston Foundation to ADDF-Canada*

**Grant is in contract.*

2013 Scientific Review Board

Every grant application submitted to the Alzheimer's Drug Discovery Foundation is reviewed by a diverse panel of scientists with expertise in a wide-range of Alzheimer's research areas. Thanks to this group for their invaluable contribution in 2013 to Alzheimer's science and drug discovery.

Larry D. Altstiel, MD, PhD
CEO
Provectra Therapeutics Inc.

Pankaj Agarwal, PhD
Director, Systematic Drug
Repositioning, Computational Biology
GlaxoSmithKline

Ottavio Arancio, MD, PhD
Associate Professor
Columbia University College of
Physicians and Surgeons

Kelly Bales, PhD
Research Fellow, Neuroscience
Research Unit
Pfizer

Guriq Basi, PhD
CEO
GSBio LLC

Adam Boxer, MD, PhD
Associate Professor
University of California San Francisco
Memory and Aging Center

Jennifer Bizon, PhD
Associate Professor
University of Florida College of
Medicine

Roberta Brinton, PhD
Chair in Therapeutic Discovery
and Development
University of Southern California

Tilmann Brotz, PhD
Principal Consultant
Konzept Drug Development Consulting

Kurt Brunden, PhD
Director, CNDR Drug Discovery
University of Pennsylvania
School of Medicine

Samantha Budd, PhD
Vice President, Neuroscience iMed
AstraZeneca R&D

John Cirrito, PhD
Associate Professor
Washington University in St. Louis

Mark Cochran, PhD
Managing Director
Johns Hopkins Healthcare

Greg Cole, PhD
Professor
University of California Los Angeles
School of Medicine

Carol Colton, PhD
Professor
Duke University Medical Center

Brad Dickerson, MD
Associate Professor
Harvard Medical School

Joel Dudley, PhD
Director, Biomedical Informatics
Mount Sinai School of Medicine

Stephen Friend, MD, PhD
President & Co-Founder
Sage Bionetworks

Douglas Galasko, MD
Professor
University of California San Diego

Hugo Geerts, PhD
Scientific Liaison Officer
In Silico Biosciences, Inc.

Marcie Glicksman, PhD
Assistant Professor
Harvard Medical School

Paul Gilligan, PhD
Research Scientist
Pennsylvania Drug Discovery Institute

Todd E. Golde, MD, PhD
Director, Center for Translational
Research in Neurodegenerative Disease
University of Florida College
of Medicine

Allan Green, MD, PhD, JD
Attorney at Law
Allan M. Green Esq., LLC

Barry Greenberg, PhD
Director of Strategy
Toronto Dementia Research Alliance

Jim Hendrix, PhD
Director, Global Science Initiatives
Alzheimer's Association

David Holtzman, MD
Professor and Chairman,
Department of Neurology
Washington University in Saint Louis
School of Medicine

Keith Hyland, PhD
Vice President
Medical Neurogenetics, LLC

Graham Jones, PhD
Professor and Chairman,
Chemistry and Chemical Biology
Northeastern University

Carl Johnson, PhD
Executive Director for Science
Hereditary Disease Foundation

Tae-Wan Kim, PhD
Associate Professor
Columbia University Medical Center

David Knopman, MD
Professor
Mayo Clinic Rochester

Sam Kongsamut, PhD
Executive Director
Neurotrope Bioscience

Jeff Kuret, PhD
Professor
Ohio State University College
of Medicine

John Lincecum, PhD
Director, Discovery Biology
ALS Therapy Development

Dane Liston, PhD
Pharmacologist
National Cancer Institute

Elias Michaelis, MD, PhD
Professor
University of Kansas School of Pharmacy

Tetsuyuki Maruyama, PhD
General Manager, Pharmaceutical
Research Division
Takeda Cambridge Limited

Richard Mohs, PhD
Vice President, Neuroscience and
Clinical Development
Eli Lilly and Company

Bruce Molino, PhD
Senior Director, Medicinal Chemistry
Albany Molecular Research Inc. (AMRI)

Dave Morgan, PhD
Professor
University of South Florida

Jill Murrell, PhD
Associate Professor
Indiana University School of Medicine

Ian Newington, PhD
Principal Scientist
GE Healthcare

Salvatore Oddo, PhD
Senior Scientist
Banner Sun Health Research Institute

Gary Olson, PhD
Co-Founder, President & CEO
Provid Pharmaceuticals Inc.

Gilbert Rishton, PhD
Chief Medicinal Chemistry Advisor
Cognition Therapeutics, Inc.

Gerard Rosse, PhD
Associate Director, Chemistry
Dart Neuroscience

Jack Rogers, PhD
Director, Neurochemistry Laboratory
Massachusetts General Hospital

Thomas Rooney, PhD
Head of Translational Research
Sanofi

Israel Silman, PhD
Professor
The Weizmann Institute of Science

Kumar Sambamurti, PhD
Professor
Medical University of South Carolina

Joel Schachter, PhD
Franchise Collaboration Lead,
Neuroscience External Discovery
and Preclinical Sciences
Merck

John Shoffner, MD
President & CEO
Medical Neurogenetics, LLC

Einar Sigurdsson, PhD
Associate Professor
New York University School of Medicine

Edward Spack, PhD
Managing Director
Fast Forward LLC

Greg Thatcher, PhD
Professor
University of Illinois at Chicago
College of Pharmacy

Martin Tolar, PhD
Founder, President & CEO
Alzheon, Inc.

Linda Van Eldik, PhD
Director, Sanders-Brown Center
on Aging
University of Kentucky

Daniel Watterson, PhD
Professor
Northwestern University Feinberg
School of Medicine

Michael Weiner, MD
Professor
University of California San Francisco
School of Medicine

Manfred Windisch, PhD
President & CEO
NeuroScios GmbH

Michael Wolfe, PhD
Professor
Brigham and Women's Hospital

Wai Haung Yu, PhD
Assistant Professor
Columbia University Medical Center

2013 Business Review Board

Biotechnology grant applications submitted to the Alzheimer's Drug Discovery Foundation are additionally reviewed by a varied panel of industry experts with backgrounds in venture capital, biotechnology and pharmaceuticals. Thanks to this group for their invaluable contribution in 2013.

Tom Cirrito, PhD
CEO and Founder
Filament BioSolutions, Inc.

Julie Eskay-Eagle, MBA
VP Strategy & Business Development
Real Endpoints LLC

Stephen Goodman, JD
Partner
Pryor Cashman LLP

Emer Leahy, PhD
President & CEO
PsychoGenics

Dan O'Connell, MBA
Managing Partner
NeuroVentures Capital, LLC

Michael Parker, MBA
Managing Partner
BioAsset Advisors

Rana Quraishi, PhD
Director of New Ventures
University of Maryland
Robert H. Smith School of Business

Eric Snyder, PhD
Director
Navigator

Support Alzheimer's Research

Join us to save neurons and save minds from Alzheimer's.

There are currently no drugs available to prevent or even slow the course of Alzheimer's, but scientists are making real progress toward a cure. There is hope in drug discovery. With your support, we can and will understand, prevent and conquer this disease.

We are tremendously grateful to all who contributed to the Alzheimer's Drug Discovery Foundation (ADDF) in 2013.

Over \$1,000,000

Mr. and Mrs. Melvin R. Goodes
Mr. Eli S. Jacobs
Mr. and Mrs. Randal B. Sandler

\$100,000 to \$999,999

Anonymous (5)
Alzheimer's Foundation of America
The Association for Frontotemporal Degeneration
The Robert A. and Renée E. Belfer Family Foundation
The Estée Lauder Companies Inc.
Foundation for Mitochondrial Medicine
Leslie and Roslyn Goldstein Foundation
The Kaneff Foundation
The Lauder Foundation
Mr. Leonard A. Lauder
Mr. and Mrs. Marc Lefkowitz
Nathan E. Saint-Amand, M.D.
Sotheby's
The W. Garfield Weston Foundation

\$50,000 to \$99,999

A.P. Kirby, Jr. Foundation, Inc.
Mr. and Mrs. Ronald A. Altman
Mr. and Mrs. Louis Caceres
Ms. Nancy Corzine
Sir Evelyn and Lady Lynn Forester de Rothschild
Evelyn H. Lauder Charitable Trust
Mrs. Judy Glickman
Mr. and Mrs. Jim Gordon
Insurance Industry Charitable Foundation, Inc.
Mr. and Mrs. Ronald S. Lauder
Mr. Dan Lufkin, The Peter Jay Sharp Foundation
Ms. Carlyn McCaffrey
National Institutes of Health
New York Academy of Sciences
The Polis-Schutz Family Foundation
Mr. and Mrs. Burton Rose
Mr. and Mrs. William F. Ruprecht, Sotheby's
Mr. and Mrs. Peter J. Solomon
Ms. Julie Weindling and Mr. Philip H. Geier

\$25,000 to \$49,999

Ms. Carol Seabrook Boulanger
C2N Diagnostics
The Charles Evans Foundation,
Mrs. Bonnie Pfeifer Evans, Co-Trustee
and Mrs. Alice Shure, Co-Trustee
Condé Nast Publications
Mr. and Mrs. Mitchell D. Eichen
Ernst & Young, LLP
First Republic Bank
Flexjet
Mrs. Bonnie Englehardt Lautenberg
Mr. and Mrs. Eric Lefkofsky
Mr. Philip Lovett
Merck Research Laboratories
Mr. and Mrs. Andrew Moller
Mr. and Mrs. Marc S. Moller
National Multiple Sclerosis Society
The Ralph and Ricky Lauren Family
Foundation, Inc.
Ms. Lois Robbins and Mr. Andrew Zaro
Emily C. Rose, M.D.
Mr. and Mrs. Gordon Segal

Mr. and Mrs. Steve Shapiro
Staples Advantage
Mrs. Joan Sutton Straus
Teauman and Grace Fuite Foundation
Tishman Speyer Properties, LP
USAgainstAlzheimer's
Mr. and Mrs. Michael Weisman
Ms. Paula Zahn

\$10,000 to \$24,999

Abbott Laboratories
Ms. Kellie Abreu
Alzheimer's Association
Mr. and Mrs. Claude Amadeo
Mr. and Mrs. Gilchrest Berg
Carol Lavin Bernick Family Foundation
Mr. and Mrs. Daniel S. Bernstein
Beyond Batten Disease Foundation
Mr. and Mrs. William Blake
Bloomberg LP
Mr. and Mrs. D. Dixon Boardman, The
Optima Charitable Foundation
BrightFocus Foundation
Mr. and Mrs. Daniel Brodsky
Mr. Louis C. Camilleri
Mr. and Mrs. Arthur Carter
Ms. Anne Cox Chambers
Mr. David Deckelbaum
Mr. John D. Demsey
Mr. and Mrs. Warren Diamond
Mr. and Mrs. Joel S. Ehrenkranz
Mr. and Mrs. Robin L. Farkas
Ms. Mary C. Farrell
The Fribourg Family
Mr. and Mrs. Thomas L. Friedman
Mr. and Mrs. Richard I. Furman
Goldman Sachs & Co. Matching
Gifts Program
Mr. David Goodes
Ms. Katie Hall and Mr. Tom Knutsen
Ms. Dina Merrill Hartley and
Mr. Ted Hartley
INOAC Packaging Group, Inc.
Mr. and Mrs. Robert A. Irvin

Ms. Rose Marie Bravo and
Mr. William Jackey
Mr. Gregory Jones
Mr. and Mrs. Howard Kessler
Mr. and Mrs. Gary Lauder
Mr. and Mrs. Jorge F. Lazo
Mr. and Mrs. Laurence C. Leeds, Jr.
Mr. and Mrs. Gerald Levine
Lilly USA, LLC
Mr. and Mrs. Daniel S. Loeb
Ms. Michelle MacDonald
The Honorable and Mrs. Earle I. Mack
Macy's and Bloomingdale's
Mr. William E. Mayer
Ms. Judy McLaren
Ms. Anne Welsh McNulty
Michael J. Fox Foundation for
Parkinson's Research
Mr. and Mrs. Lucian Morrison III
Omega Capital Enterprises, LLC
Open Hearts Foundation
Pfizer Inc.
Mr. Thomas Pheasant
Mr. and Mrs. Robert Prince
Mr. and Mrs. John R. Reinsberg
Mr. and Mrs. Daniel Roitman
Mr. and Mrs. William C. Rudin
Mr. and Mrs. Richard E. Salomon
Mr. and Mrs. Nathan Sandler
Mr. and Mrs. George W. Schiele
Mr. and Mrs. Paul C. Schorr III
Mr. and Mrs. Warren L. Schwerin
Mr. Larry Silverstein
Mr. David Solomon
The Sun-Times Foundation
Ms. Mary Rose Taylor
Laurie M. Tisch Illumination Fund
Trish and George Vradenburg,
USAgainstAlzheimer's
Ms. Giselle F. Wagner and
Mr. Paul A. Myerson
Dr. and Mrs. Allan Weinstein
Mr. and Mrs. Buzz Zaino
Mr. and Mrs. Robert B. Zink

\$5,000 to \$9,999

Anonymous
Mr. and Mrs. Carl Allen
Mr. and Mrs. Robert Banks
Mr. and Mrs. Philip J. Bazelides
Ms. Glennis C. Beacham
Ms. Karen H. Bechtel
Bender Foundation, Inc.
Mr. and Mrs. Ted Berghorst,
The Berghorst Foundation Inc.
Mr. Ryan Bernardini
Mr. and Mrs. Scott Black
Mr. and Mrs. Roy Bostock
Ms. Mary Ellen Brophy
Ms. Bobbi Brown and Mr. Steven Plofker
Ms. Lynda Carter
Ms. Maureen Case and Mr. Victor Fuentes
Ms. Antoinette Delruelle
Mr. and Mrs. Charles M. Diker
Mrs. Cherrie Doggett
Ms. Laurie Dowley and Ms. Thia Breen
Mr. and Mrs. Howard Draft
Mr. and Mrs. Todd Eagle
Father's Day/Mother's Day Council, Inc.
Mr. and Mrs. Naill M. Ferguson
Forest Laboratories, Inc.
Ms. Marcia French
Mr. John Galantic, Chanel, Inc.
Mr. Bruce Gelb
Ms. Carol Lanier Goodman
Mr. and Mrs. Mark W. Hennessy
Mr. and Mrs. Roger Hertog
Ms. Marlene Hess and Mr. James D. Zirin
The Howard Johnson Foundation
Mr. and Mrs. James C. Kennedy
Mr. and Mrs. Michael J. Kennedy
Mr. and Mrs. H. Fred Krimendahl II
Ms. Melissa Landais, JPMorgan Chase
Ms. Carol Launer
Mr. and Mrs. Steven Levy
Mrs. Holly Madigan
The Marc Haas Foundation,
Mr. and Mrs. Stanley Shuman

Mr. and Mrs. Bennett Marshall
 Private Banking & Investment Group
 at Merrill Lynch

Mr. and Mrs. William Miller

Mrs. Nancy Montgomery

Ms. Pamela J. Newman

Mr. Keith Nickels

Ms. Vivian Nienow and
 Ms. Dorothy Loecher

Mr. and Mrs. Larry Nussdorf

Mr. and Mrs. Alan J. Patricof

Mr. and Mrs. Michael Pierce

Printpack Inc. & The Gay and Erskine
 Love Foundation

Ms. Joan Rall

Mr. and Mrs. William Rayner

Ms. Margaret Rice

Ms. Denise Rich

Ms. Pilar Crespi Robert and
 Mr. Stephen Robert

Mr. and Mrs. Elihu Rose

Ms. Lita Rosenberg

Mr. and Mrs. Jack Rudin

Ms. Patricia Bennett Sagon
 Saks Fifth Avenue

William and Jacqueline Shaw
 Family Foundation, Inc.

Ms. Lisa B. Spikell

Mr. and Mrs. Cary Stamp

The Honorable and
 Mrs. Craig R. Stapleton

Mr. and Mrs. Donald Tober

Mrs. Jeanette Sarkisian Wagner and
 Dr. Paul A. Wagner

Mr. and Mrs. John F. Walsh
 Walter Family Foundation

Ms. Catherine J. Webb

Ms. Virginia A. Weil

Mr. and Mrs. Ronald Weintraub

Ms. Wendy L. Wilshin

Ms. Linda Zambelli

\$1,000 to \$4,999

Anonymous

ADAC

Mr. and Mrs. Paul S. Adler

Mr. Barry Akrongold

Mr. Louis Mendez and Mr. Charles Allem
 Tina Alster, M.D.

Mr. and Mrs. Timothy John Alvino

Mr. and Mrs. Steven Ames
 AMYLGEN

Mr. Richard Aneser

Mr. and Mrs. John Angelo

Mr. and Mrs. Bonneau Ansley

Mr. and Mrs. Robert Aquilina

Mr. Peter Aresty

Ms. Marion Bachrach and Family

Mr. and Mrs. David M. Baldwin

Mr. and Mrs. Martin Balsam

Mr. and Mrs. David A. Bardes

Ms. Anne Barge Clegg

Mr. and Mrs. Ronald S. Baron

Ms. Mercedes T. Bass

Mr. and Mrs. Richard I. Beattie

Mr. and Dr. Stanley Bergman

Mr. and Mrs. Simon Beriro

Mr. Tony Bernhardt

Mr. Howard Bernick

The Honorable and Mrs. Stuart Bernstein
 BioFocus

Mr. Steve Blacher

Mr. and Mrs. Dameron Black III

Mr. and Mrs. Robert S. Blank

Mr. and Mrs. Wolf Blitzler

Mr. and Mrs. Bernard Bloom

Ms. Faith Bobrow

Ms. Jeannine Bouillier Siegmond

Mr. and Mrs. Patrick Bousquet-Chavanne

Mr. and Mrs. Walter M. Bowen

Mr. and Mrs. Richard S. Braddock

Mr. and Mrs. Lawrence Brandt

Mr. and Mrs. John Brennan

Mr. and Mrs. Daniel J. Brigati

Mr. and Mrs. Peter R. Brinckerhoff

In Memory

**We remember those taken by Alzheimer's in 2013
 by continuing to fight for a cure.**

Ruth Bachrach	William Eisner Lefkowitz
Naomi Banks	Ninfa Leo
Alvin Bernstein	Joan Mangam Wegner
Matthew Bucksbaum	Cecile Mitchell
Michael Cavuoti	Fred Myers
Bernice Dressen	Richard Shafto Love Pearman
Sheila Driben	Naoma M. Schmidt
Jeanette Fuenning	Anne Seabrook
Russell Head	Catherine Shook Smithwick
Carol C. Holmes	Joyce Smith
Christopher David Illick	Anne Stoakes
Jacqueline Elizabeth Jablon	Oscar S. Straus II
James F. Jerome	John Thompson

Ms. Mildred Brinn
 Mr. Nicholas J. Brown
 Mr. William Brown
 Mr. and Mrs. Alan Bubes
 Mr. and Mrs. Richard Burgoon
 Mr. and Mrs. Leonard Burka
 Ms. Sharon Burka
 Ms. Bari Burman
 Mr. and Mrs. Seth Burnstein
 Mr. and Mrs. Calvin Cafritz
 Mr. and Mrs. William Cafritz
 Cantor Fitzgerald
 Mr. and Mrs. Dan Carithers
 Mr. John K. Castle
 Ms. Marilyn Caufield
 Ms. Sue Chalom
 Ms. Chary Arvind
 Mr. and Mrs. Gustavo A. Cisneros
 Mr. Michael T. Cohen
 Ms. Jeanne Coleman
 Ms. Virginia Coleman
 Mr. Lloyd E. Constantine
 Mr. Everett Cook
 Mr. George Cook
 Mrs. Joyce Cowin
 Mrs. Elaine Culiner
 Cyprotex Discovery Ltd.
 Bonnie M. Davis, M.D.
 Mrs. Caroline Jones Davis
 Ms. Beth Rudin DeWoody
 Mr. Kevin Dieterich
 Ms. Amy DiGeso and Mr. Paul Rakowski
 Mr. and Mrs. Jerome Dobson
 Dorothy G. Bender Foundation
 Dr. and Mrs. Ronald Dozoretz
 Mr. Sean Driscoll
 Mr. and Mrs. Kenneth Duberstein
 Mr. and Mrs. Stephen F. Dubord
 Mr. and Mrs. John Eastman
 Ed Voyles Automotive Group
 Mr. and Mrs. Lewis M. Eisenberg
 Ms. Alison McCall and Mr. Peter Eliel
 Mrs. Osborne Elliott

In Honor

In 2013, gifts were made to the ADDF in honor of the following individuals:

Sharrie M. Alechman	Elmer Maddy
Claire E. Becker	June Manheim
Jean Brigati	Eileen Mason
Edna Constantine	Elaine and Billy Miller
Nancy Crown	Melanie Nussdorf
Marti Dinerstein	Loretta Rice
Jean Ernst	Pheoebe Rice
Agnes Farrell	Margaret Roberson
Betty Farrell	Selma Rowe
Mary Farrell	Warren Rubin
Phebe Farrow Port	Janice Rudbart
William Ferguson	Liz and Randal Sandler
Barbara Fields	Michael Scott
John Ford	Sandra Seidman
Mel and Nancy Goodes	Janet Stoakes
Anne Gottlieb	Mollie Wein
Grucci Family	Peggie Sue Weir
Mrs. P.B. Harris	Beverly and Martin Weise
Pauline Harris	Karen Weise and Noah Buhayar
Leonard A. Lauder	Paula Zahn
Elise and Marc Lefkowitz	Linda Zambelli

Emory University	Mr. and Mrs. Fabrizio Freda
Mrs. Deborah Epstein	Mr. Jay W. Freedman
Mrs. Nancy Epstein, Artistic Tile	Mr. and Mrs. Robert Fried
Mr. and Mrs. Melvyn J. Estrin	Ms. Charlotte Moss and Mr. Barry Friedberg
Mr. and Mrs. Alfonso Fanjul	Ms. Carolee Friedlander
Ms. Samia Farouki	Ms. Anita Friedman
Mr. and Mrs. David C. Farrell	Mr. and Mrs. Ross S. Friedman
Ms. Phebe Farrow Port	Mr. and Mrs. Ernie Fyrwald
Mr. and Mrs. Harry Fields	Ms. Mary Galvin
Ms. Debbie Forrest	Mr. David Gerson
Mr. and Mrs. Joe Foster	Mr. Sam Ghussan
Mr. and Mrs. William Fowler	Mr. and Mrs. Robert Gibb
Mr. and Mrs. Sam Fox	

Mr. Andrew D. Gilbert
The Honorable and Mrs. Joseph B. Gildenhorn
Ms. Lois Chiles and Mr. Richard Gilder
Mr. and Mrs. Jim Glassman
Mr. and Mrs. Arne Glimcher
The Morris and Arlene Goldfarb Family Foundation, Inc.
Mr. Thomas S. Gordon
Mr. Michael Gould
Mr. and Mrs. Ian Graham
Ms. Susan Zises Green
Mr. and Mrs. Holcombe T. Green
Ms. Sylvia Greenberg
Mr. and Mrs. Philip M. Gross
Mr. and Mrs. Martin Gruss
Mr. and Mrs. Gordon Gund
Ms. Agnes Gund
Mr. and Mrs. Geoffrey Gund
Mr. and Mrs. Louis Hagopian
Ms. Judy Jackson and Mr. Bruce Haims
Ms. Pamela Harrington
Mr. Chris Harris
Mr. and Mrs. Ira J. Harris
Ms. Ellen R. Harris
Mr. Alan G. Hassenfeld
Mrs. Cynthia Hazen Polsky
Ms. Nona Heaslip
Mr. and Mrs. David Heller
Mr. and Mrs. Peter Hennessy
Mr. and Mrs. Roger Hertog
Mr. John Higgins
Ms. Catherine Hirsch
Mr. and Mrs. Irvine O. Hockaday, Jr.
Mr. Richard Hoffman
Ms. Rachel Kohler and Mr. Mark Hoplamazian
Host Committee, Inc.
Dr. and Mrs. Clifford Hudis
Ms. Kathryn H. Hutchison
Mr. Barry V. Hutner (Parc Monceau Antiques)
Ms. Charlotte Ibarra
Mrs. Selden Dunbar Illick

Mrs. Rosalind G. Jacobs
James & Janice Stanton Foundation
Mr. and Mrs. Maurice Jennings
John and Jacolyn Bucksbaum Family Foundation
The John L. & Sue Ann Weinberg Foundation
Mr. Christopher Johnson
Ms. Marissa T. Johnson
Mrs. Karen Johnson
Mr. and Mrs. Allen Jones, III
Mr. and Mrs. Bolton Jones, Jr.
Ms. Violeta Jordan
Mr. Vernon E. Jordan
JSW Lifesciences GmbH
Mr. and Mrs. Armen KalayDijan
Mr. and Mrs. Harry P. Kamen
Mr. and Mrs. Mitchell Kaneff
Kasper
Mr. and Mrs. George S. Kaufman
Ms. June Kay
Mr. Stiles A. Kellett, Jr.
Mr. and Mrs. Shaker Khayatt
Ms. Karyn A. Khoury
Mr. and Mrs. Jonathan Kim
Mr. and Mrs. Dwaine Kimmet
Dr. and Mrs. Israel Kogan
Mr. and Mrs. Kevah Konner
Mr. and Mrs. Peter Krulewitch
Mr. and Mrs. Richard Kunes
Mr. and Mrs. Richard Kurtz
Mr. Peter La Tronica
Ms. Solange Landau
Ms. Jacquelynne P. Lanham
Ms. Jane Darden Lanier
Ms. Susan Lehrman
Mr. and Mrs. Morvin Leibowitz
Mr. and Mrs. Melvin Lenkin
The Dorothea L. Leonhardt Foundation
Ms. Marcia Levine and Mr. Pierre Levai
Allan I. Levey, M.D., Ph.D.
Mr. and Mrs. Noel Levine
Ms. Alexandra Trower and Mr. Jon Lindsey
Mr. Leonard D. Litwin

Mr. Nicholas A. Loiacono
Mr. Thomas H. Lowder
Mr. and Mrs. John D. Lowenberg, Sr.
Mr. Lawrence Luebcke
Mr. and Mrs. Roger Lynch
Mr. and Mrs. Harry Macklowe
Mr. and Mrs. Walter Maher
Mr. and Mrs. Vincent A. Mai
The Honorable and Mrs. Frederic V. Malek
The Malkin Fund
Ms. Gene Manheim
Manulife Financial
Mr. and Mrs. Troy W. Maschmeyer, Jr.
Ms. Betsy Matthews
Mr. and Mrs. Jonathan P. May
Mrs. Shirley Maytag-King
Mr. and Mrs. John McCord
Dr. and Mrs. Hugh McCrystal
Mr. and Mrs. McGowan
Mr. Robert McLean
Mr. Henry Meagher
Ms. Robin Meltzer
Mr. and Mrs. G. Jeff Mennen
Mr. and Mrs. Sam Michaels
Ms. Beverly Michel
MidOcean US Advisor
Mr. and Mrs. Lester Miller
Mr. and Mrs. James N. Mills
Dr. and Mrs. Mark Mintun
Mr. Scott Mitchell
Ms. Judith Mogul and Mr. Daniel J. Kramer
Mr. James H. Morgens
Mr. and Mrs. Robert S. Morrison
Mr. Doug Morse
Morselife Foundation, Inc.
Mr. and Mrs. Sidney Moskowitz
Mr. David T. Schiff
Mulé Family Foundation
Mutual of Omaha
Mrs. Louie A. Naing
Mr. and Mrs. Jim Nalley
Mr. and Mrs. Daniel Neidich
Mr. John Hall Nelson

Neurotrack
 New York Stem Cell Foundation, Inc.
 Mr. and Mrs. William A. Nitze
 Mr. and Mrs. McKee Nunnally
 Mr. and Mrs. Andrew J. Nussbaum
 Mr. and Mrs. Harold Ofstie
 Ms. Victoria Palefsky
 Mrs. Jean H. Pearman
 Ms. Erica Peitler
 Ms. Marsha Perreault
 Ms. Connie Anne Phillips
 Palindrome Design
 Pillsbury Winthrop Shaw Pittman LLP
 Ms. Veronique Gabai-Pinsky
 Ms. Jackie Pletcher
 Mr. and Mrs. Cedric Prouve
 PsychoGenics, Inc.
 QPS
 reMYND
 Renovo Neural, Inc.
 Mr. and Mrs. Mercer Reynolds
 Mr. and Mrs. Lewis Rice
 Mr. Stefan Richter
 Ms. Mary Riddell
 Mr. and Mrs. Maury H. Riff
 Mr. and Mrs. Robert Ritter
 Mr. and Mrs. Randy Rizor
 Mrs. Sheila Johnson Robbins
 The Robert F. and Eleonora W. McCabe Foundation
 Mr. and Mrs. Mack Robinson
 Friends of Sharon Rockefeller
 Mr. and Mrs. John D. Rockefeller IV
 Mr. and Mrs. Randolph K. Rolf
 Dr. and Mrs. Leon Root
 Mr. James Rose
 Mr. and Mrs. Ronald Rosner
 Ms. Janet C. Ross
 Mr. and Mrs. Ralf Roth
 Dr. and Mrs. Ronald M. Roth
 Mr. and Mrs. Howard J. Rubenstein
 Mr. Stephen I. Sadove
 Ms. Sharon T. Sager and Mr. Loring Swasey

In Kind Gifts

Abrielle Fine Linens & Lingerie
 Amaryllis Floral and Event Design
 Antiques Market
 Arkay Packaging
 Aruna Seth
 Atlanta Dream
 Balance, Your Pilates, Yoga & Gyrotonic Studio
 Bedford Post Inn
 Beverly Wilshire, A Four Seasons Hotel
 BLT Steak
 Blue Tulip Chocolates
 Bobbi Brown
 Bumble and bumble.
 Bunny Williams Inc.
 Café Milano
 Champion Beauty Supply
 Chelsea Lately
 Colliers International NY LLC
 Nancy Corzine
 DC Sedan and Limousine
 Jay and Cindy DeFrancesco
 Delta Air Lines
 Dennis Dean A Catering Company
 Design Cuisine
 Di Modolo
 Faith and Warren Diamond
 Diener Jewelers, Allison Diener Perlmutter
 The Estée Lauder Companies Inc.
 Fabulous Things
 Feld Entertainment
 First Republic Bank
 Four Seasons Resort Palm Beach
 Andrew D. Gilbert
 Glenmere Mansion
 Gomez-Gracia
 Gotham Dream Cars
 Hermès
 Oscar Heyman
 Alex Hitz
 The Hollywood Roosevelt Hotel
 Honeybee
 The Howard Gilman Foundation
 Hu's Shoes & Hu's Wear
 The Inn at Serenbe
 JANUS et Cie
 Jason Wu
 Jennifer Miller Jewelry
 Jenny Ng Designs
 Karma Beauty Lounge by Erwin Gomez
 Kevin N. Kitt
 Diana Kogan
 Elise and Marc Lefkowitz
 Annie Leibovitz
 Jamie Maciuszek
 Mandarin Oriental, Washington, D.C.
 Martinson Coffee / The Mother Parkers Tea & Coffee Company
 Susan and Emilio Matt
 Metrokane
 Miller Union
 Nantucket Shortbread
 Lisa Piernot
 The Pierre
 Prestige Beverage Group
 The Ritz-Carlton, Washington, DC
 The Ritz-Carlton Lodge, Reynolds Plantation
 Sharon Percy Rockefeller, WETA
 Rudy's Music
 Sharon T. Sager
 Saks Fifth Avenue
 Santa Maria Novella, Chevy Chase
 SARAR
 Scalamandré
 Vincent Sciortino
 SEGUSO
 The Signature Theatre
 SPANX
 The St. Regis Atlanta
 Martha Stewart
 Stoli Group USA
 Tosca
 Andrew Turk
 Urban Country
 Washington Institute of Dermatologic Laser Surgery
 The West Institute for Skin, Laser and Body Contouring
 Wölffer Estate

Mr. and Mrs. Sal Salibello
SALON ILO
Ms. Kerri Scharlin and Mr. Peter Klosowicz
Peter M. Scheer DD.S, M.S.
Mr. David Schiff
Ms. Jane Hartley and Mr. Ralph Schlosstein
Ms. Aileen Schruth
Mr. and Mrs. Edmondo Schwartz
Mr. and Mrs. William P. Scully
Mr. John Seabrook
Ms. Robyn Shepherd
The Shiloh Foundation
Mr. and Mrs. Charles Shoemate
The Carlynn and Lawrence Silverman
Family Foundation Inc.
Mr. and Mrs. Albert Small, Jr.
Ms. Lesly Smith
Mr. and Mrs. Joseph E. Smith
Mr. and Mrs. Spencer Smul
Mr. and Mrs. Richard Solomon
Mr. Maurice Sonnenberg
Ms. Alicia Sontag
SRI International
Mr. and Ms. James Star
Mr. and Mrs. Richard Stark
Mr. and Mrs. Ed Staros
Mr. and Mrs. Michael Steinhardt
Mr. and Mrs. Austin Stephens
Mrs. Joyce Sterling
Philip E. Stieg, M.D.
Dr. and Mrs. William K. Stubbs III
Mr. and Mrs. Mark Styslinger
Mr. and Mrs. Andrew Suzuki
Ms. Judy Swanson
T. Rowe Price Foundation, Inc.
Mr. and Mrs. Douglas T. Tansill
Mr. and Mrs. A. Alfred Taubman
Ms. Felicia Taylor
Mr. and Mrs. Joe Thomas
Lady Barbara Thomas Judge
Mr. and Mrs. Peter Thompson
Mr. and Mrs. William Tobin
Mrs. Julia Tolkan

Ms. Annie Totah
Ms. Lee Traub
Mr. W. J. Truettner, Jr.
Truist
Mr. John Tyers
UBS
Mr. and Mrs. James Ueltschi
United Way of New York City
Ms. Eunice C. Valdivia
The Honorable William J. Vanden Heuvel
Mr. and Mrs. Michael Voslow
Mr. and Mrs. Edwin A. Wahlen, Jr.
Ms. Ann Marie Huebner and
Mr. Ross P. Waller
Ms. Cynthia Clift and Mr. David Wassong
Mr. and Mrs. Lorne R. Waxlax
Ms. Rosemary Fine Weaver
Ms. Jane Greenwald and
Mr. Lawrence A. Wein
Mrs. John L. Weinberg
Mr. and Mrs. Jon Weiner
Dr. Arthur C. Weisenseel
Mr. and Mrs. Pat Welsh
Mr. Howard Wendy
Ms. Jennifer Wendy and Mr. Andrew Beckler
Mr. and Mrs. Mark West
Tina West, M.D.
Ms. Nan S. Whalen
Mr. and Mrs. Clifford Whitehall
Mrs. Malcolm Hewitt Wiener
Mr. and Mrs. Jeffrey Wilks
Ms. Jan Willinger
Mr. and Mrs. William Winslow
Ms. Helena Wong
Mr. and Mrs. Carl Zelinsky

\$500 to \$999

Mr. and Mrs. Mel Adler
Aon Foundation
Ms. Jan Aronson
Mr. Bill Assaad
Mr. and Mrs. William B. Astrop
Mr. and Mrs. John Bader
Brian Bai, M.D.

Steven Bailey, Ph.D.
Ms. Amy Bamford
Ms. Betty A. Barton
Mr. M.J. Bas
Ms. Marguerite C. Bateman
Mr. and Mrs. Charles H. Battle, Jr.
Ms. Linda Bedell
Ms. Gail Bendit
Mr. and Mrs. Douglas N. Benham
Mr. and Mrs. Bruce Berger
Mr. Jim Berges
Mr. and Mrs. Allan J. Berman
Mrs. Janet Black
Mr. George W. Booker
Theodoros Botsoglou, M.D.
The Boys & Girls Club of Bellport Area
Stefania Bradley, Ph.D.
Pamela Braker, M.D.
The Brooks Foundation
Ms. Virginia Brophy
Daniela Brunner, M.D.
Dr. Karen E. Burke and
Mr. Peter J. Goulandris
Mr. Patrick Burkey
Mr. and Mrs. Matt Burrell
Ms. Mary K. Bush
Mr. Josh Cammaker
Mr. and Mrs. John A. Canning
Ms. Iris Cantor
Mr. and Mrs. Gordon Caplan
Ms. Giosetta Capriati
Mr. Fred J. Carter, Jr.
Jianhua Chao, M.D.
Peter Cheung, Ph.D.
Chicago Estate Planning Council
Henry Chilton, M.D.
Mr. and Mrs. Neil Cohen
Ms. Beverly B. Coker
Ms. Karen Cook, MS
Mr. Jeremy Corkern
Ms. Ann Cousins
Cousins Properties Foundation Inc.
Mr. and Mrs. Ed Croft

Mr. and Mrs. Clifton Culberson
Ms. Corinne Davidov
Ms. Sandi A. Davidson
Mr. Philip Davis
Mr. and Mrs. Bruce Dayton
Mr. and Mrs. Arnaud de Borchgrave
Mr. David Deweese
Symeon Deres, M.D.
Mr. and Mrs. John Deushane
Mr. Zul Dhukka
Ioannis Diakogiannis, M.D.
Mr. and Mrs. Samuel Difeo
Evangelia Dimitrakoudi, M.D.
Ms. Mary Wayne Dixon
Mr. and Mrs. J. Bennett Donaldson, Jr.
Mr. and Mrs. Marc Dorfman
Julie Douville, Ph.D.
The Duber Family Foundation, Inc.
Ms. Elizabeth M. Dugan
Ms. Donna Edbril
Mr. and Mrs. Robert G. Edge
Mr. and Mrs. Pat Epps
Mr. Stuart M. Fain
Mr. and Mrs. Thomas C. Farnsworth, Jr.
Mr. and Mrs. Kenneth Feld
Howard M. Fillit, M.D.
Mrs. Susan Forte
Mr. and Mrs. Michael E. Foster
Ms. Anita Kern and Mr. Carl Fowler
Mr. and Mrs. William H. Fox
Ms. Michelle L. Freeman
Mr. and Mrs. William Frick
Ms. Linda Fuselier and
Mr. Christopher Ogden
Mr. and Mrs. Todd Galkin
Gannett Foundation
Mr. and Mrs. Bruce Gendelman
Ms. Beata Glover
Evangelos Gogalis, M.D.
Michael Gold, M.D.
Ms. Edith Goldberg
Mr. Michael Golden
Ms. Ann Gottlieb

Mr. Michael B. Graff
Paschalia Grammena, MD
Mr. and Mrs. John W. Grant
Mr. Dean Gray
Mr. and Mrs. Hix Green
Mr. and Mrs. Ronald Greenberg
Mr. Alexis Gregory
Ms. Catherine Gropper
Ms. Betsy Grossman, Harry and
Beatrice Sley Foundation
Ms. Allison Grover
Ms. Louise S. Gunn
Ms. Lois Haber
Mr. John W. Hadden II
Mr. and Mrs. John Hall
Mr. and Mrs. Thomas H. Hall
Mr. E. Matthew Hare
Ms. Lisa Harwood and
Ms.Carolynn Silverman
Mrs. Bobba Paul Hauserman
Dr. Philip Haydon
Dr. Bibia Heidmann
Ms. Lesley Heller
Anonymous, in memory of
Mr. Jacques Boulanger
Mr. Ken C. Hicks
Mr. Adam Hinman
Ann and Bob Holder
Mr. and Mrs. Sherman Hotchkiss
Huff-Deuberry, Inc.
Mr. and Mrs. Edward Hutton
Ms. Susan Hyatt
Ms. Raeanne Hytone
Ms. Joan Jaco
Mr. and Mrs. Morton Janklow
Mr. and Mrs. R.B. Jennings, Jr.
Mr. and Mrs. Neil Johnson
Ms. Allison Johnson
Ms. Eugenia Jones
Ms. Judy Jordan
Judy & Howard Berkowitz Foundation
Mr. Fahad Kajani
Maria Karadrakonti, M.D.
Mrs. Jayne Keith

Ms. Janet Kellett
Ms. Joan E. Kend
Mr. and Mrs. John R. Kennedy
Mr. and Mrs. William Kenyon
Mrs. Andre Kikoski
Ms. Phyllis L. Kim
Mr. and Mrs. Roger Kimmel
Paschalis Kirtsios, M.D.
Ms. Morley Klausner
Mr. W. Donald Knight
Dr. Samir Koirala
Honorable Thomas C. Korologos and
Honorable Ann McLaughlin Korologos
Ms. Elizabeth Szancer Kujawski and
Mr. Tom Zoufaly
Ms. Ann Kusch
Mr. and Mrs. Richard Landau
Mr. Mel Laracey
Mr. and Mrs. Thomas P. Latimer
Ms. Susan Lee
Mr. John Lenhart
Ms. Marcia Levine
Mr. and Mrs. Jerrold G. Levy
Mr. Warren Lichtenstein
Mr. and Mrs. David Liebowitz
Ms. Susan Locke
Ms. Dena Lombardo
Ms. Sheila Lumsden
Mrs. Nancy Lynn
Ms. Erin M. Lyons
Mr. and Mrs. Barry MacTaggart
Ilias Manavis, M.D.
Mr. and Mrs. James L. Manley
Ms. Ellen Marks
Mr. and Mrs. James C. Marlas
Ms. Susan Masser
Mrs. Mary Ann Massey
Ms. Katherine Mayer
Mr. Lom McClan
Mr. and Mrs. Richard P. McCoy
Mr. Thompson McDaniel
Mr. and Mrs. Richard G. McDermott, Jr.
Mr. John McGuire

Ms. Sallie McKinney, The Prince of Wales Foundation

Mr. and Mrs. Alfred I. Means, Jr.

Mr. and Mrs. Brad J. Melvin

Ms. Barbara Mendlowitz

Ms. Marjorie Minicozzi

Mr. James Moe

Mr. and Mrs. Ambrose K. Monell

Ms. Audrey B. Morgan

Mr. Carter H. Morris

Mr. Pierce M. Morris

Mr. and Mrs. Lester S. Morse, Jr.

Mr. David Moscow

Mozilla Corporation

Ms. Cheryl Murphy

Mr. and Mrs. Mitchell Schrage

Naik Snehal, Ph.D.

Mr. and Mrs. Daniel Neary

Ms. Judith E. Neisser

Mr. Newsome

Northern Trust

Ms. Erin Oettinger

Ms. Marcia K. Knight and Mr. Donald Orr

Mr. and Mrs. John P. Oswald

Ms. Susan Packard

Ms. Mary Alice Pappas

Mr. and Mrs. Timothy Pasik

Mr. and Mrs. Solon Patterson

Ms. Allison Perlmutter

Vasyl Pinchuk, M.D.

Mr. and Mrs. Paul G. Podolsky

Ms. Irma Poretsky

Ms. Pothula

Ms. Carol B. Price

Ms Elizabeth B. Pritchett

Mr. John Puckhaber

Ms. Elizabeth Rappa BS, Pharm.D., RPh

Nisha Rathore, M.D.

Ms. Natalie Reno

Mr. Clayton S. Reynolds

K. Richards, M.D.

Mr. William Rose

Ms. Gretchen Rose

Mr. Ronald A. Rosenfeld

Mr. and Mrs. Paul Ross

Dr. and Mrs. George Roush

Ms. Beth Rudin DeWoody

Mr. and Mrs. Michael C. Russ

Mr. and Mrs. Paul S. Russell

Mr. Kevin M. Ryan

The Ryna & Melvin Cohen Family Foundation, Inc.

Ms. Katy Sadeghian

Ms. Linda Sadowski

Mr. and Mrs. Richard Sandler

Mr. and Mrs. Stephen Sands

Ms. Frances Scaife and Mr. Tom McCarter

Ms. Vicki Schaefer

Mr. John E. Schmidt

Ms. Christine Schmidt

Ms. Judith Schneebeck

Mrs. Barbara Schwartz

Mr. and Mrs. John Scully

Ms. Bari Seiden

Mr. and Mrs. Charles Shaffer

Mr. Michael Shara

Mr. Robert Sharp

Sherrill Furniture Company

Mr. and Mrs. Gene Simonsen

Mr. and Mrs. Thomas Sinchak

Mr. and Mrs. Joshua Slocum

Ms. Peggy Brooks Smith

Mr. and Mrs. Denis Somar

Ms. Cathy Soref

Dr. and Mrs. Stephen H. Spahn

Mr. and Mrs. David Steiner

Ms. Betty B. Stephens

Mr. Ned Stern

Ms. Margaret Stouffer

Jackson Streeter, M.D.

Mr. Danny Talati

Mr. and Mrs. Harold Tananbaum

An Tanghe, M.D.

Mr. Bradley Thayer

Mr. Shane Thomas

Mr. and Mrs. Kenneth Thompson

Mr. and Mrs. Michael Thoyer

Mr. David Tillson

Ms. Martha Gross and Mr. Robert Tracy

Athanasios Tsouvalas, M.D.

Ms. Paris Turull

Ms. Shanee Uberman

Ms. Lynn Varian

Ms. Sahba Vaziri and Mr. Ali Reza

Mr. Rehan Virani

Mike Vitek, Ph.D.

Mr. and Mrs. Kenneth H. Walker, FAIA

Mr. and Mrs. Larry E. Walker

Ms. Benita Warmbold

Ms. Susan Waterbury

Ms. Ann Webster

Mr. and Mrs. Edmund Wellington III

Ms. Jane Bradley Wheeler

Mr. Kenzel R. Wilson

Mr. and Mrs. Michael Winer

Michael Wood, PhD

Mr. Ray Woody

Ms. Dorothy York

Mr. and Mrs. Shelton Zuckerman

Please notify us if you have named the Alzheimer's Drug Discovery Foundation in your will or trust. By doing so, you will become a member of our Legacy Society and be listed in the Annual Report, unless you prefer to remain anonymous.

Alzheimer's Drug Discovery Foundation

Statements of Financial Position

Assets	12/31/13
Cash and cash equivalents	
Operating	\$ 2,911,519
Restricted	<u>27,900</u>
Total cash and cash equivalents	2,939,419
Investment, at fair value	8,705,188
Contributions receivable	4,552,996
Due from Institute for the Study of Aging	68,815
Other assets	16,557
Total assets	<u>\$ 16,282,975</u>
Liabilities and Net Assets	
Liabilities	
Accounts payable and accrued liabilities	\$ 51,249
Grants payable	8,665,995
Deferred revenue	30,765
Due to the Institute for the Study of Aging, Inc.	-
Total liabilities	<u>8,748,009</u>
Net assets	
Unrestricted	6,491,418
Temporarily restricted	1,043,547
Total net assets	<u>7,534,965</u>
Total liabilities and net assets	<u>\$ 16,282,974</u>

Statement of Activities

Change In Net Assets	12/31/13
Support and Revenues	
Support	
Contributions and grants	\$ 7,150,947
In-kind contributions from the Institute for the Study of Aging, Inc.	3,212,178
Proceeds from special events, net of direct expenses	2,826,874
Revenues	
Grant Returns	25,000
Conference registration fees and other income	249,603
Interest income	<u>8,034</u>
Total support and revenues	<u>13,472,636</u>
Expenses	
Program services	9,870,696
Fund raising	1,341,435
Management and general	<u>648,675</u>
Total expenses	<u>11,860,806</u>
Change In net assets	1,611,830
Net assets, beginning of year	<u>5,923,136</u>
Net assets, end of period	<u>\$ 7,534,966</u>

Audited financials available upon request

ADDF 2013 Board of Governors and Overseers

Board of Governors

Honorary Chairman

Sandra Day O'Connor

Co-Chairmen

Leonard A. Lauder

Ronald S. Lauder

President

Nancy Corzine

Robert A. Belfer

Lady Lynn Forester de Rothschild

Bonnie Pfeifer Evans

Melvin R. Goodes

Nancy Goodes

Thomas F. McWilliams

Randal Sandler

Alice Shure

Peter J. Solomon

Sally Susman

Paula Zahn

Ex Officio

Howard Fillit, MD

Officers

Lisa Somar

Kevin Dieterich

Board of Overseers

Co-Chairmen

Sharon T. Sager

Randal Sandler

Carol Seabrook Boulanger

Charles Cangro

Faith Perlmutter Diamond

Julie Eskay-Eagle

Mitchell D. Eichen, JD, LLM

Allan Green, MD, PhD, JD

Christopher Johnson

Susan Roth Katzke

Elise Gelman Lefkowitz

Philip Lovett

Emilio Matt

Pamela J. Newman, PhD

Phebe Farrow Port

Joan Sutton Straus

Mary Rose Taylor

Alison Zaino

Linda S. Zambelli

ADDF Staff

Howard Fillit, MD

Founding Executive Director and Chief Science Officer

Nancy Sanford

Vice President and Chief Philanthropy Officer

Science

Diana Shineman, PhD

Director, Scientific Affairs

Rachel Lane, PhD

Assistant Director, Scientific Affairs

Penny Dacks, PhD

Assistant Director, Aging and Alzheimer's Prevention Program

Aaron Carman, PhD

Program Manager, Aging and Alzheimer's Disease Prevention

Sara Classen

Manager, Conferences and Meetings

Danielle Popow

Grants Assistant

Development

Mollie Wein

Assistant Director, Special Events

Dresden Joswig

Communications Manager

Elizabeth Feskoe

Database and Development Coordinator

Sarah Toepke

Development Associate

Joseph Trapani

Executive Assistant

Jessica Cavanaugh

Special Events Assistant

Rochelle Bloom

Communications and Marketing Consultant

Finance

Ethan Hutchinson

Director, Finance and Administration

Diane Duong

Assistant Director, Finance and Administration

Administration

Aspasia Moundros

Executive Assistant and Operations Coordinator

Katie Mischik

Office Manager

Since 1998, the Alzheimer's Drug Discovery Foundation has granted more than \$65 million to fund 450 Alzheimer's drug discovery programs in 18 countries.



Alzheimer's
Drug Discovery
Foundation

Conquering Alzheimer's Through Drug Discovery

57 West 57th Street, Suite 904
New York, NY 10019
Phone: 212 901-8000
Email: info@alzdiscovery.org

www.AlzDiscovery.org